

Installation **Instructions**

1293 N. Harvey Mitchell Pkwy.
Bryan, Texas 77803
800.444.1444 ph
979.823.1005 fax
www.aswcommercial.com

Simplifying **Windows**

ALLSEASONS

COMMERCIAL WINDOWS & DOORS

Complete Architectural CD Binder **Inside**

Blast
Impact
Educational
Multi Family
Hotel / Motel
Light Commercial
Heavy Commercial
Architectural Products

TABLE OF CONTENTS

GENERAL OVERVIEW

1. GENERAL NOTES
2. CONSTRUCTION NOTES
3. BUILDING CODES
4. WINDOW INSTALLATION
5. VENT INSTALLATION

BASIC INSTALLATION WITHOUT SUB FRAME OR PANNING

1. INSTALLATION OF WINDOW UNITS IN CONSTRUCTION OPENINGS
2. INSTALLATION OF OPTIONAL CLIP ANCHORS
3. INSTALLATION OF NAILING FIN
4. INSTALLATION OF ARCHITECTURAL SILLS
5. INSTALLATION OF A SELF MULLING SYSTEM
6. INSTALLATION OF MULLIONS WITHOUT SUB FRAME OR PANNING

HUNG WINDOW INSTALLATION

1. GENERAL NOTES

CASEMENT WINDOW INSTALLATION

1. GENERAL NOTES

PANNING FRAME INSTALLATION

1. GENERAL NOTES
2. MULLION INSTALLATION IN PANNING

SUBFRAME INSTALLATION

1. GENERAL NOTES
2. MULLION INSTALLATION IN SUB FRAME

1. GENERAL NOTES

Windows are finished products and must be protected against damage. The following procedures and precautions are recommended:

A. PROTECTION AND STORAGE

- i. Handle the material carefully.
- ii. Do not drop or drag from the truck to avoid racking or damage to windows and accessories.
- iii. Stack the windows with directional arrows in the proper position to allow adequate separation so the windows will not rub together.
- iv. Store the windows off the ground (i.e., pallets, planks, etc.).
- v. Protect against the elements and other construction trades by using well ventilated covering.
- vi. Remove material from packaging if it becomes wet. Then repack materials and move to dry location.

B. CHECK MATERIAL

Check all material upon arrival for quantities and damages. Any visibly damaged material must be noted on the freight bill at the time of receipt. If a claim is required, the receiving party must process a claim with the freight carrier. If the delivery is by an All Seasons Windows truck, any damage or variance in the quantities of window units or boxes must be reported to the All Seasons Windows driver during the unloading process.

C. CLEANING WINDOW UNITS

Final cleaning of windows is not the responsibility of All Seasons. Cement, plaster, terrazzo, alkaline, and acid based material used to clean the construction are very harmful to finishes and should be removed with water and mild soap immediately; otherwise, permanent staining will occur. A spot test is recommended before any cleaning agent is used.

For cleaning of anodized aluminum surfaces, refer to AAMA 609.93 Voluntary Guide Specification for Cleaning and Maintenance of Architectural Anodized Aluminum.

For cleaning of painted aluminum surfaces, refer to AAMA 610.1-1979 Voluntary Guide Specification for Cleaning and Maintenance of Painted Extrusions.

Please note: The prolonged application of masking tape, duct tape, and similar products to painted aluminum surfaces will induce permanent bonding of the tape to the paint. This will cause adhesion failure between the paint and the aluminum surface when the tape is removed.

2. CONSTRUCTION NOTES

The following practices are recommended for all window installations:

A. REFERENCE SHOP DRAWINGS

Check the shop drawings and installation instructions to become thoroughly familiar with the project. The shop drawings take precedence and include specific details for the project. The installation instructions are general in nature, and cover the most common conditions.

B. CHECK OPENINGS

Make certain that construction that will receive the material is in accordance with the contract documents. If not, notify the general contractor in writing and resolve differences before proceeding with your work.

C. BENCHMARK LAYOUT

All work should start from benchmarks and/or column centerlines as established by the architectural drawings and the general contractor.

D. TRUE/LEVEL/PLUMB

All materials are to be installed plumb, level, true, and in proper alignment and relation to established line grades. Products are to be installed maintaining tolerances of 1/8" in 12'-0" of length.

E. ISOLATE ALUMINUM

Isolate aluminum that directly contacts masonry or incompatible materials with a heavy coat of zinc chromate, plastic isolators, or bituminous paint.

F. POURED AND DEBRIDGED SECTIONS

Do not drill, punch, penetrate or alter the urethane bridge in any manner at anchorage.

G. FASTENING

Fastening means any means of securing one part to another or to adjacent materials. These instructions specify only those fasteners used within the system. Due to varying perimeters, conditions, and job performance requirements, anchor fasteners are not specified in these instructions. For anchor fastening, refer to the shop drawings or consult a fastener manufacturer for the appropriate fastener and size to be used on the job.

H. SEALANTS

Sealants must be compatible with all materials they contact, including other sealant surfaces. Consult the sealant supplier for recommendations relative to compatibility, adhesion, priming, tooling, and shelf life. Remove any excess sealant, not by All Seasons.

I. EIFS

Per EIFS manufacturers recommendations, all exterior horizontal projections shall have a positive slope of not less than 6:12 (26.57 degrees) and all terminations and gypsum board edges shall be back wrapped and sealed. See specific EIFS manufactures literature for additional and more specific information. See EIMA's Guide to EIFS

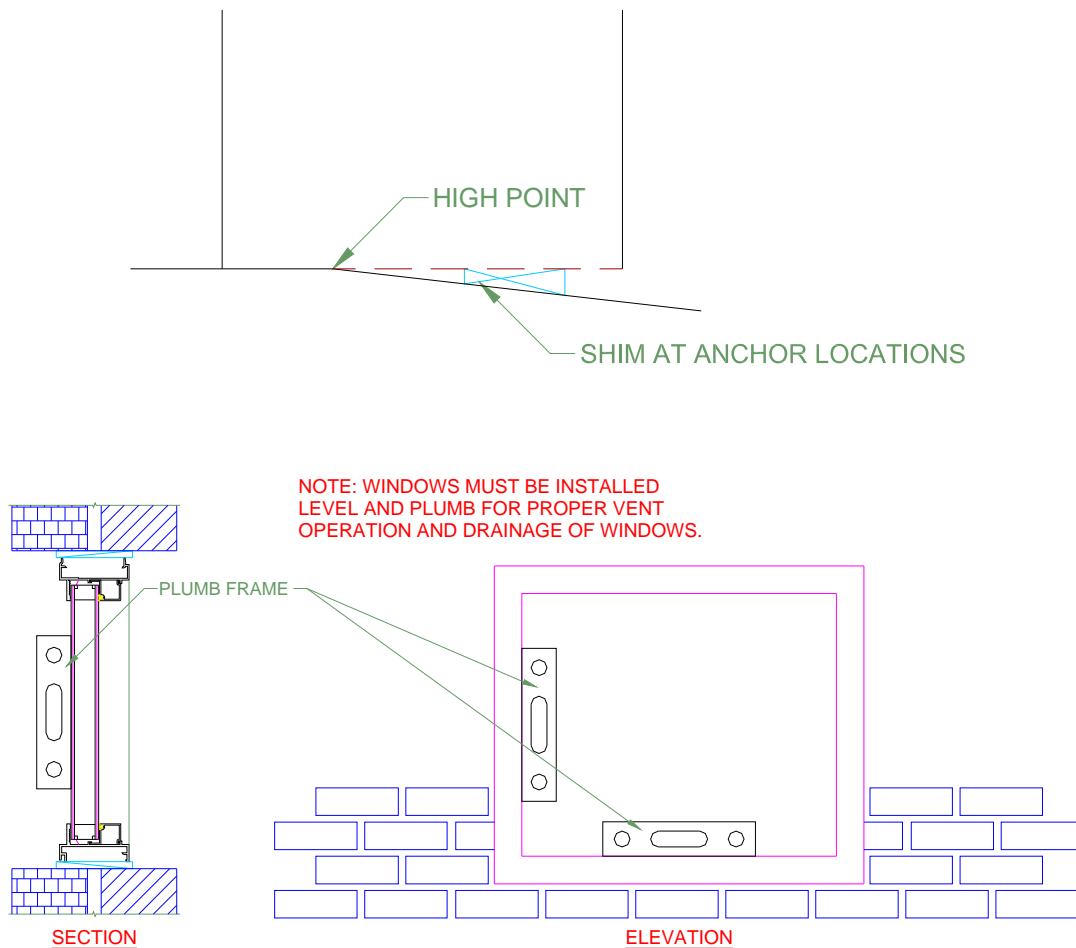
Construction for instructions. Any use of All Seasons products with barrier EIFS system will void the Limited Warranty.

3. BUILDING CODES

Glass and glazing codes governing the design and use of products vary widely. All Seasons does not control the selection of product configurations, operation hardware, or glazing materials; therefore, we assume no responsibility in these areas. It is the responsibility of the owner, architect, and the installer to make these selections in strict conformity to all applicable codes.

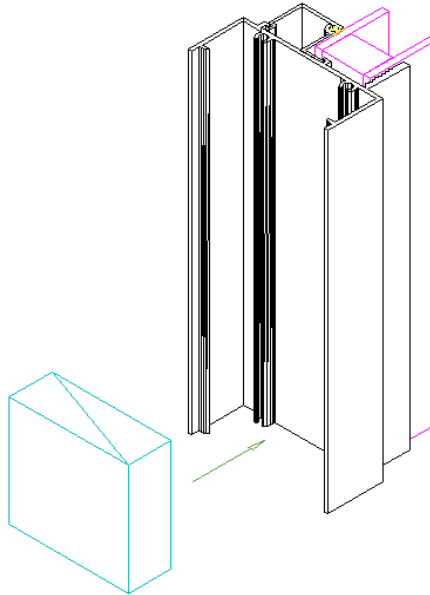
4. WINDOW INSTALLATION

- A.** The rough opening should be checked for the correct size as determined by tolerances listed in the architectural specifications and the shop drawings.
- B.** Establish the face of the window line at the head, sill, and jambs. This reference is to be arrived at by using the architectural plans, general contractor's reference lines, and shop drawings.
- C.** Determine the high point of the construction sill using a string line or a transit and shim the balance of the opening to match.



- D.** Do not fasten drapery tracks, ceiling supports, or convactor covers to windows. The window must be free to contract and expand.
- E.** From the shop drawings, determine the size, type, and quantity of perimeter fasteners required. All Seasons will provide All Seasons material to All Seasons material fasteners only. All perimeter fasteners are not by All Seasons and should be purchased prior to arriving at the job site. If sub frame is provided, please refer to the sub frame installation sheets.
- F.** Anchors used will depend on job conditions and installer's preference. Refer to the fastener manufacturer's recommendations for proper sizing and edge distance requirements for all applications.

- G.** Minimum anchor spacing:
- i.** No more than 3" from each side of frame joints.
 - ii.** No more than 3" from each side of locking points.
 - iii.** No more than 18" O.C. between corners and locking points.
 - iv.** Unless otherwise specified on approved shop drawings or calculations.
- H.** Seal all exposed perimeter joints, between structure and window perimeters, with a skinning, non-hardening type of sealant. Refer to the approved shop drawings for joint design.
- I.** Install blocking in the window frames at anchor locations. Treated wood or other approved blocking as required are not by All Seasons.



- J.** Seal all anchor heads along the sill.
- K.** Throughout these instructions, the terms sealant and butyl sealant will appear and for the purpose of these instructions they are defined as follows:

SEALANT – A skinning, non-hardening material.

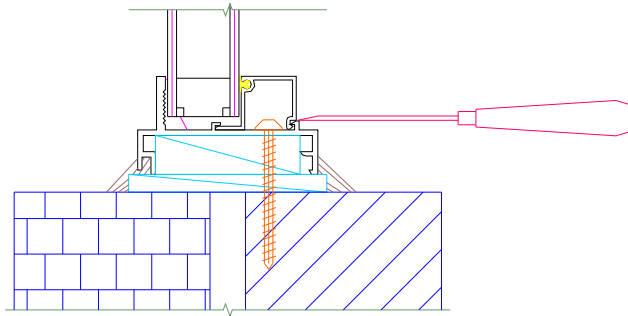
BUTYL SEALANT – A non-skinning, non-hardening material.

- L. Sealants and butyls must be compatible with all surfaces on which adhesion is required, including other sealant surfaces.

5. VENT INSTALLATION

Upon completion of the window installation, all operating vents must be checked for proper alignment and operation. If vents are removed, care must be taken to ensure that vents are reinstalled into the same frames they were removed from. It may be necessary to adjust the hinges, keepers, deflection stops, and friction arms to ensure proper sealing and locking. All hardware must be cleaned and lubricated as necessary to provide smooth operation.

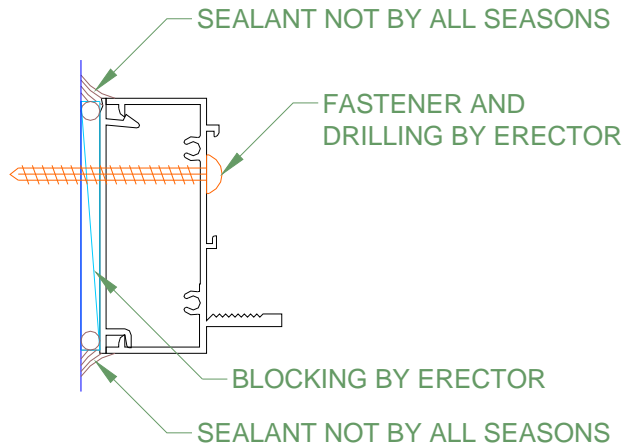
GENERAL PROCEDURE FOR THE INSTALLATION OF WINDOW UNITS IN CONSTRUCTION OPENINGS WITHOUT SUB FRAME OR PANNING



TYPICAL SILL ANCHORAGE

ALL SEASONS WILL NOT BE HELD LIABLE
OR ACCEPT RESPONSIBILITY FOR DAMAGE
TO THE GLAZING BEAD, WINDOW FINISH,
AND/OR BREAKAGE OF GLASS WHICH IS
A RESULT OF REMOVAL AND REINSTALLATION
OF THE GLAZING BEAD.

The glazing bead may require removal and reinstallation. Care must be exercised to avoid damage. Always remove the beads that run in-between first. To remove glazing bead, apply pressure to the inside lower edge of the bead to compress the glazing vinyl. While maintaining pressure, give an upward movement. If the bead is really tight, a putty knife in the crevice between the bead and frame giving a slight twisting motion as pressure is applied to the bead.

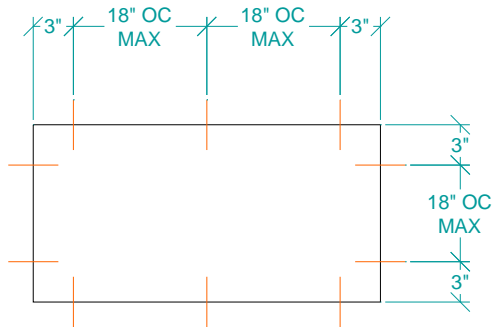


OPTIONAL ALUMINUM FRAME FILLER

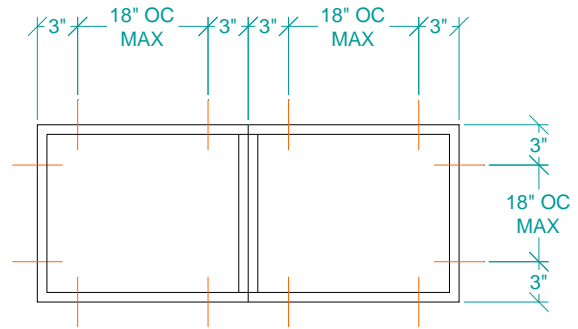
INSTALLATION WITH OPTIONAL CLIP ANCHOR

- A.** Locate clip anchors around the entire window perimeter positioned 3" from the end of each frame and approximately 18" O.C. MAX unless noted otherwise or specified on approved shop drawings.
- B.** Move window into position in the building opening.
- C.** Shim tight between the construction opening and the back of the anchor with treated lumber or other approved blocking.
- D.** Install two fasteners per clip anchor. One fastener should be as close to the window as possible.

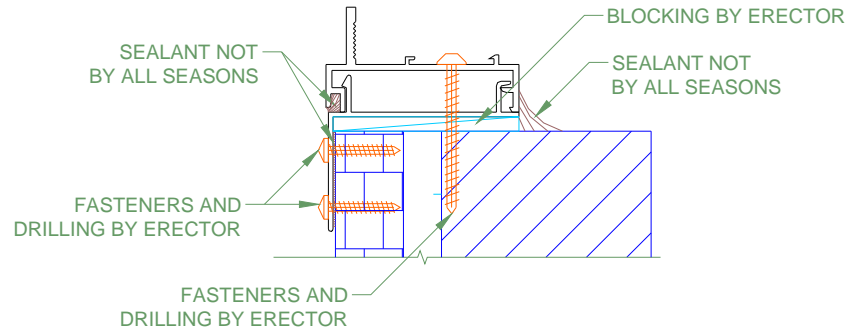
COMPLETELY READ ALL SECTIONS WHICH PERTAIN
TO YOUR PROJECT BEFORE STARTING WORK. THIS IS
FOR GENERAL RECOMMENDED ERECTION
PROCEDURES ONLY. FOR ACTUAL JOB CONDITIONS,
SEE THE DETAILS ON THE SHOP DRAWINGS (IF APPLICABLE).



TYPICAL ELEVATION

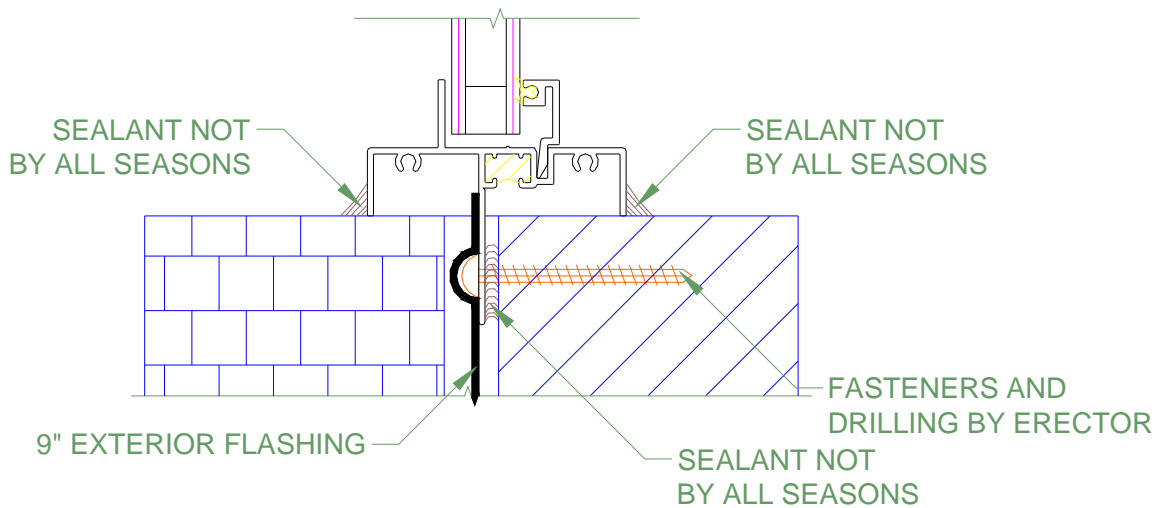


SIDE STACK OR MULLION



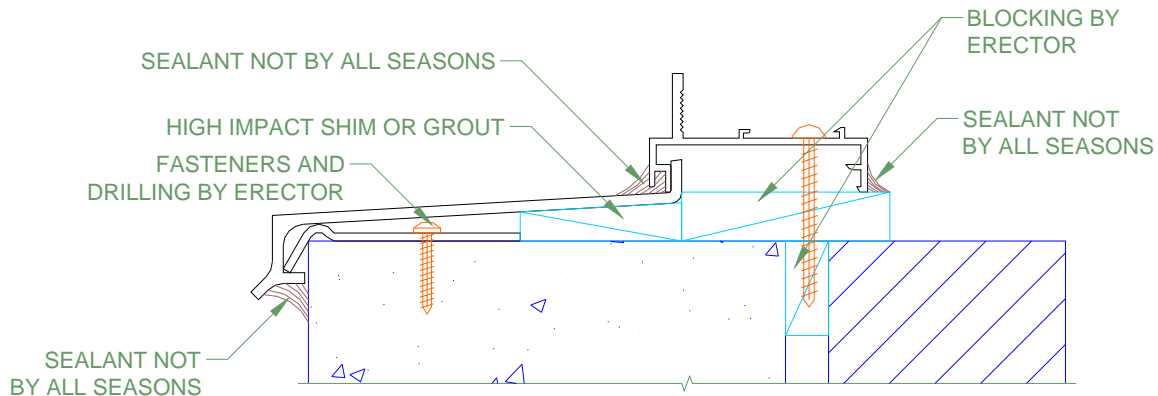
INSTALLATION OF NAILING FIN

- A.** Place a 3/8" continuous bead of sealant around the perimeter of the window on the inside of the nailing fin in line with the recess on the opposite side of the fin.
- B.** Recommended sequence of flashing installation:
 - a. Sill
 - b. Jambs
 - c. Head
- C.** 9" flashing around entire perimeter; head, jambs, and sill; shall meet Federal Specs UU-B-790 A, Type 1, Grade A, Style ICBO Report #1025, not by All Seasons.
- D.** Locate fasteners around the entire window perimeter positioned 3" from each end of frame and approximately 18" O.C. MAX unless noted otherwise or specified on approved shop drawings.



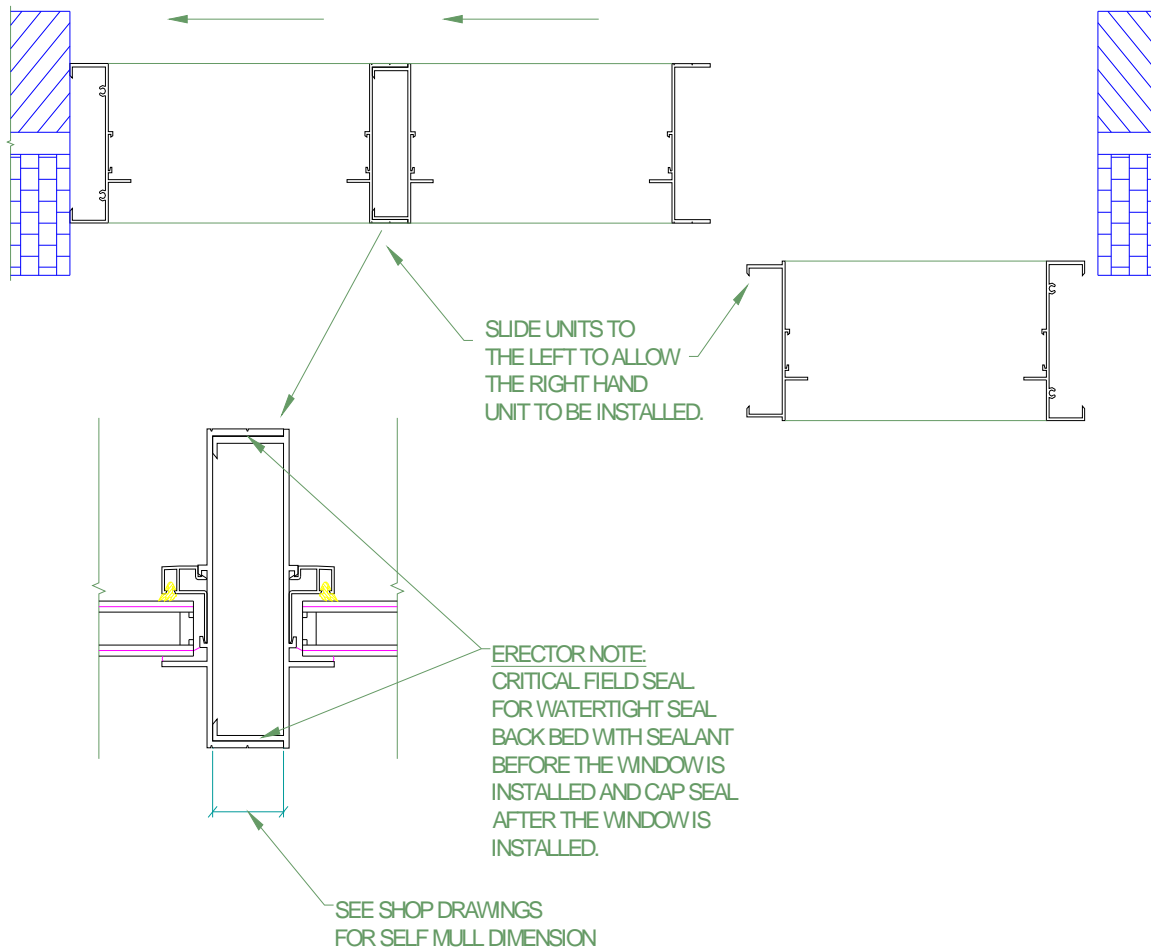
INSTALLATION OF ARCHITECTURAL SILLS

- A.** Establish location of the architectural sill from the approved shop drawings.
- B.** Locate the architectural sill anchor clip positions 3" from each end and approximately 18" O.C. MAX, unless otherwise specified on approved shop drawings or calculations.
- C.** Drill the anchor hole using the anchor clip as a template.
- D.** Shim the clips and sill as necessary to set level across the span of the opening.
- E.** Based on the approved shop drawings, apply a bed of grout or a high impact resistant shim for the architectural sill to rest on.
- F.** Hook the exterior leg of the architectural sill over the exterior leg of the anchor clip and press the sill into a bed of grout or sealant.



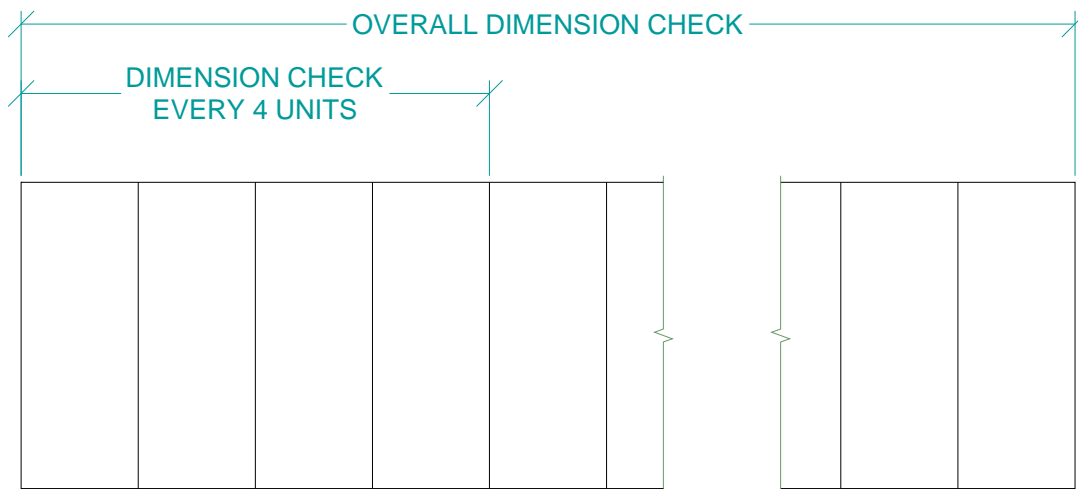
INSTALLATION OF A SELF MULLING SYSTEM

If self mulling is utilized, it will be necessary to either stack the units together prior to placing them in the opening or placing them in the opening and sliding all units to one side, allowing for the last unit to be installed.



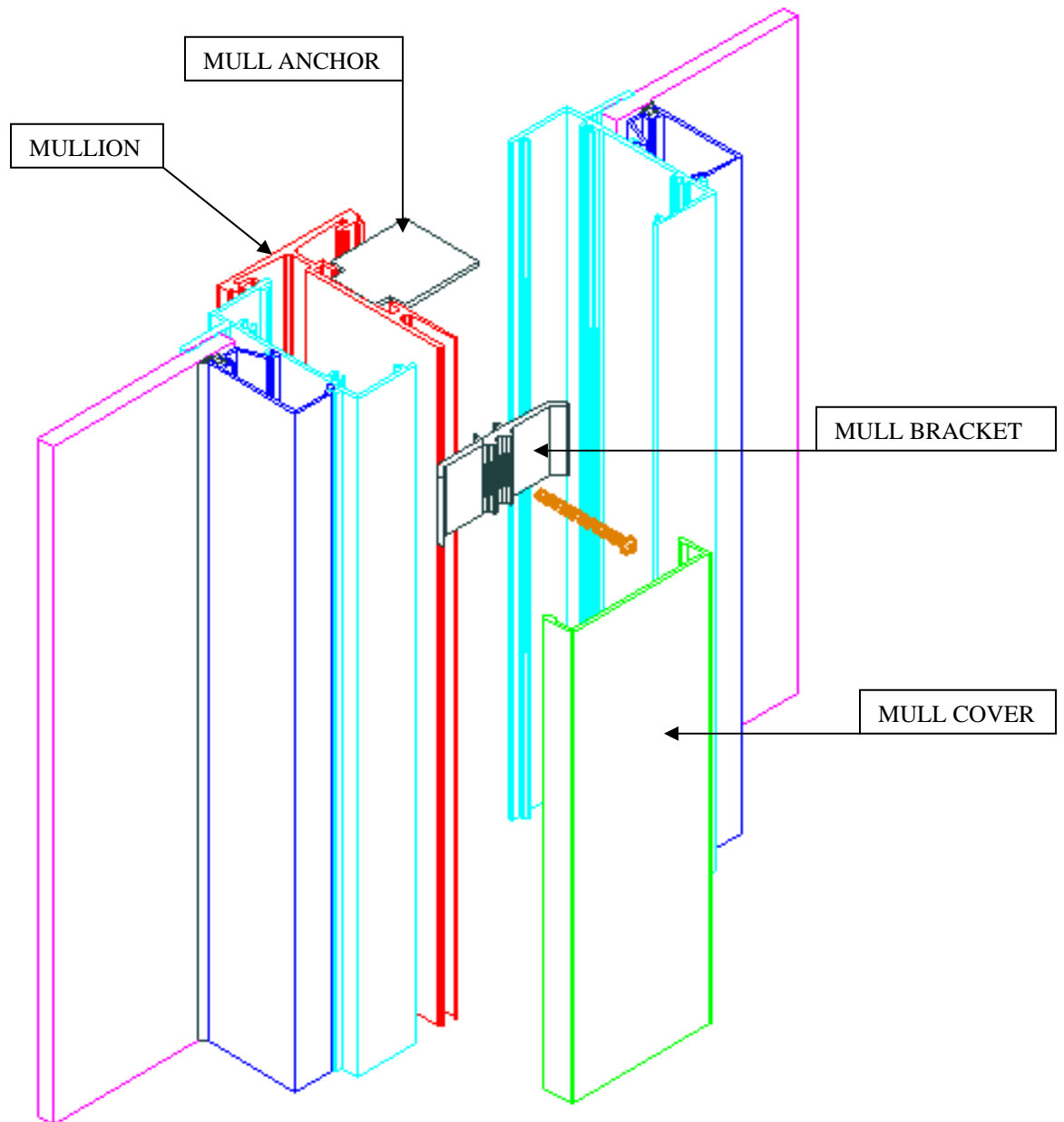
INSTALLATION OF MULLIONS **WHEN NOT USING SUB FRAME OR PANNING**

- A.** Refer to the shop drawings for the correct centerline location of the mullion.
- B.** For elevations not using sub frame or panning, mullions are supplied at the opening dimension plus 1", square cut, to allow for field trimming as required.
- C.** Set the mullion into the opening. Plumb the mullion to the opening. Fasten the mullion to the opening by using the All Seasons supplied mullion anchor clips. Locate one clip at the construction head and one at the sill. Attach the clips to the opening with erector furnished fasteners, and then attach the mullion to the mull anchors with All Seasons furnished fasteners.
- D.** Attach the mullion brackets to the mullion as close to the top and bottom as possible and then 12" O.C. with All Seasons supplied fasteners.
- E.** Field cut the vertical mullion cover to fit between the opening conditions and snap over the mullion brackets.



ERECTOR NOTE:
CHECK THE OVERALL FRAME DIMENSIONS
ON EVERY 4 OPENINGS ON LONG RUNS
TO AVOID DIMENSIONAL BUILD UP.

COMPLETELY READ ALL SECTIONS WHICH PERTAIN
TO YOUR PROJECT BEFORE STARTING WORK. THIS IS
FOR GENERAL RECOMMENDED ERECTION
PROCEDURES ONLY. FOR ACTUAL JOB CONDITIONS,
SEE THE DETAILS ON THE SHOP DRAWINGS (IF APPLICABLE).



GENERAL INSTALLATION INSTRUCTIONS **FOR HUNG WINDOWS**

- A.** Install the frame plumb, level, and true. Hold a constant vent opening for both the height and width.
- B.** Erector note: All hung windows are to be blocked and anchored at jamb midpoint as detailed on the project shop drawings in order to prevent jambs from bowing or twisting. The window dimension at the midpoint should be within 1/16" of the window dimension at the head and/or sill. All fasteners at the jambs shall be flat heads.
- C.** Double hung windows are shipped from factory with a temporary shipping cord attached around the window. This cord must remain attached around the window until just prior to installation into the opening. Early removal can cause rolling, spreading, and twisting of the frame jamb. This can cause disengagement of the sash balance, disengagement of the sash from the frame, and severe personal injury.
- D.** Due to the attachment and location of all balances, refer to the project shop drawings for any through jamb anchorage method. Please consult the Account Estimator for assistance in jamb anchorage not specifically shown on the shop drawings.

GENERAL INSTALLATION INSTRUCTIONS **FOR CASEMENT WINDOWS**

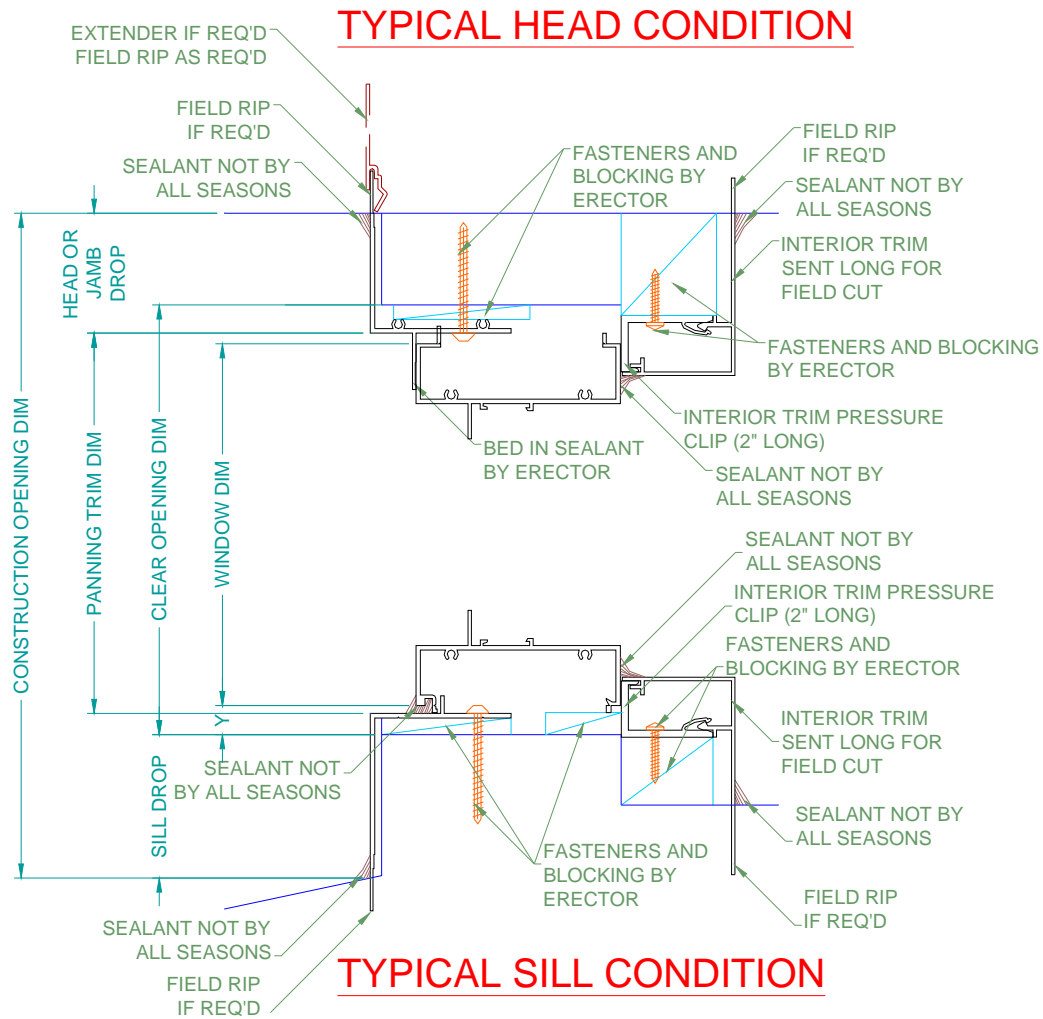
- A.** Install the frame plumb, level, and true. Hold a constant vent opening for both the height and width.
- B.** Erector note: All casement windows must be securely anchored through the hinges to the building substrate to prevent sagging of the vent when opened. If closures are used, blocking must be placed at hinge locations between the closure and the window jamb and the hinges still must be securely anchored to substrate. Refer to project shop drawings for correct placement of hinge blocking and anchorage.

PANNING FRAME INSTALLATION PROCEDURE

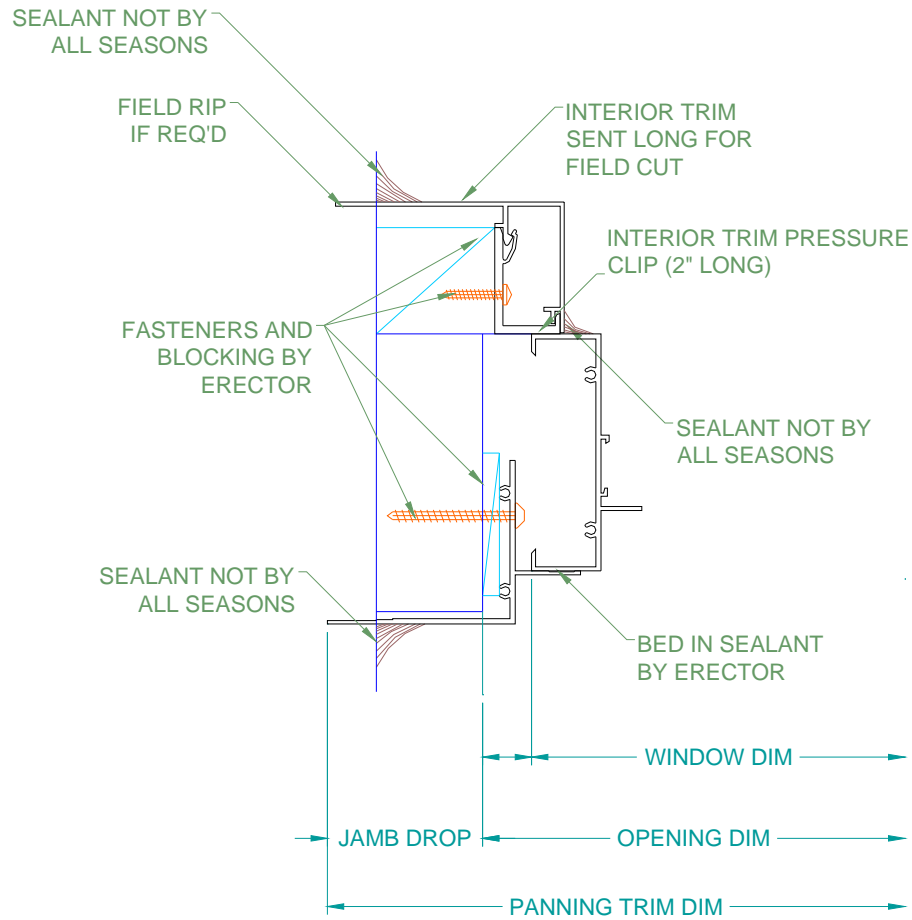
Typical panning material is shipped factory cut to size and is fabricated to fit the window dimension. The perimeter flange of the panning is to be field trimmed to fit the construction opening. Windows, panning frames, and accessories will have the same window mark designations.

- A.** Field assemble the panning frame with supplied pan head screws.
- B.** Determine the correct panning placement in the opening. All Seasons combination of panning, window, and trim is provided to entirely cover the old torn out section. Refer to the shop drawing details for correct panning placement in order to allow for correct coverage.
- C.** Determine the exact panning sill face dimension by adding together the sill drop plus the “Y” dimension and rip down the flange of the sill panning.
- D.** Determine the required panning frame height and cut any excess from the panning head. If additional coverage is required panning extenders can be purchased.
- E.** Determine the required panning width and remove excess equally from both panning jambs. If additional coverage is required panning extenders can be purchased.
- F.** Use siliconized sealant to cover all screw heads and all panning frame joints on the non-exposed side of the panning.
- G.** Pull the panning frame into the opening from the exterior. Make sure the interior trim will cover all exposed interior perimeter conditions before anchoring the panning.
- H.** Attach the entire panning perimeter square, plumb, and level into the opening at 18” O.C. with attachment screws not by All Seasons. If mullions are required refer to the mullion installation.
- I.** Caulk the perimeter of the pan frame to the surrounding construction opening. Back bed the panning vinyl with sealant just before insertion of the window. The window must be wet sealed to the panning if vinyl is not available.

- J.** Set the exterior sill leg of the window onto the sill of the panning frame. Then push the window head and jamb in against the panning head and jamb.
- K.** Install the interior trim pressure clips. Start by attaching the first clip approximately 6" from each corner, then every 18" O.C. around the entire window perimeter. Attach clips to the opening with erector furnished anchors. Drilling holes in the clips is not by All Seasons. The trim clips provide the structural support for the window unit. Each clip must be attached to the substrate.
- L.** All interior trim covers are sent long to be field cut. Horizontal interior trim covers run through unless noted on the shop drawings. To install first measure the interior horizontal opening width and cut the horizontal trim covers accordingly, then snap in place.
- M.** Measure between the horizontal trim covers, and then cut the vertical trim covers to the proper length. Snap the vertical trim covers into place.



COMPLETELY READ ALL SECTIONS WHICH PERTAIN
TO YOUR PROJECT BEFORE STARTING WORK. THIS IS
FOR GENERAL RECOMMENDED ERECTION
PROCEDURES ONLY. FOR ACTUAL JOB CONDITIONS,
SEE THE DETAILS ON THE SHOP DRAWINGS (IF APPLICABLE).



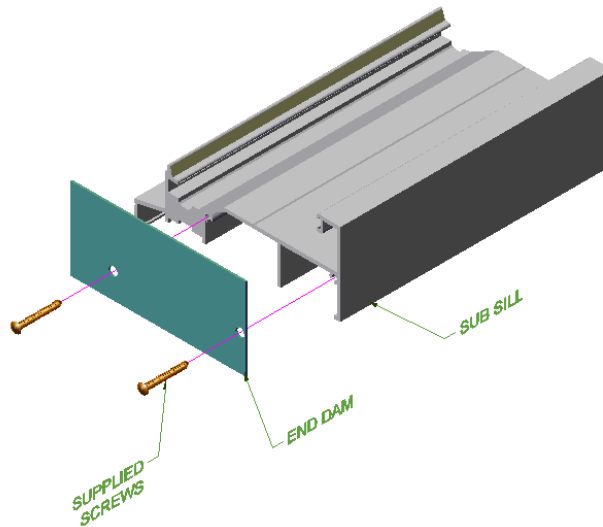
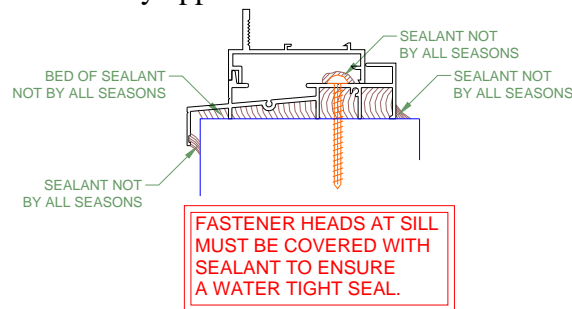
TYPICAL JAMB CONDITION

MULLION INSTALLATION IN PANNING

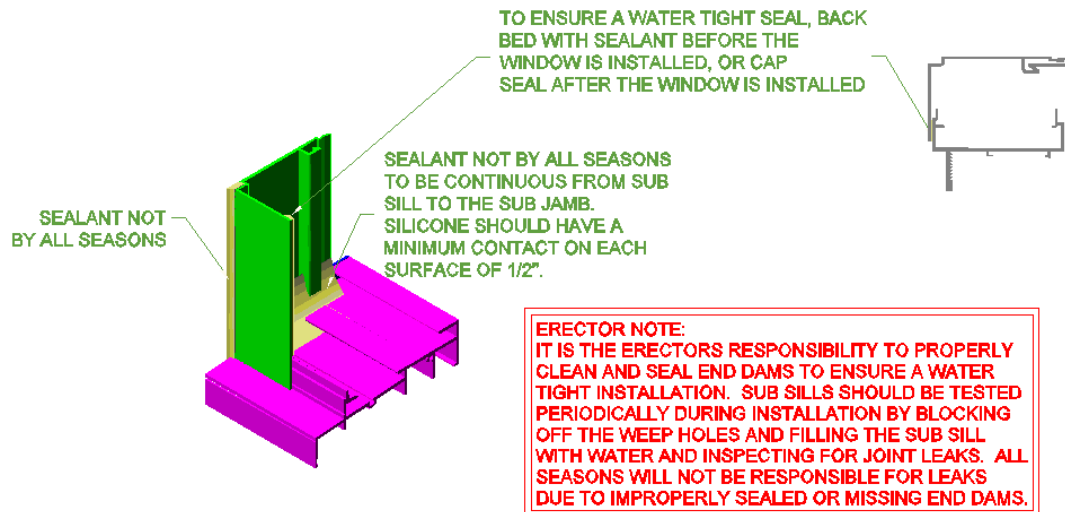
- A.** First complete steps A through H in the panning installation. (Page 16 of 23)
- B.** Refer to the shop drawings for the correct centerline location of the mullions.
- C.** Set the mullion into the opening. Plumb the mullion to the opening. Fasten the mullion to the opening by using the All Seasons supplied mullion anchor clips. Located one clip at the construction head and one at the sill. Attach the clips to the opening with erector furnished fasteners, and then attach the mullion to the mull anchors with All Seasons furnished fasteners.
- D.** Attach the mullion brackets to the mullion as close to the top and bottom as possible and then 12" O.C. with All Seasons supplied fasteners
- E.** Field cut the vertical mullion cover to fit between the opening conditions and snap over the mullion brackets.

GENERAL INSTALLATION INSTRUCTIONS FOR ALUMINUM PERIMETER SUB FRAME SYSTEM

- A.** Measure the opening for the horizontal opening dimension. All sub frame material is shipped long for field cut and field drilling.
- B.** Square cut the sub sill to fit the opening dimension. Trim weather stripping to the appropriate length using caution not to stretch the material. Compact any excess as needed.
- C.** Field butter end of sub sill with silicone then apply supplied end cap and caulk screw heads. Sub sills will have factory applied end dam on one end.
- D.** Set sub sill in full bed of sealant. Then install sub sill with erector supplied fasteners and then apply sealant to fastener heads.
- E.** Weep holes are factory applied.



- F.** Measure for the sub jamb length.
- G.** Subtract your “Y” dimension from the “X” dimension. Square cut the sub jambs to this length from the top of the sub jamb. The sill end of the sub jamb usually has notching of some kind by All Seasons.
- H.** Install the sub jambs plumb shimming as necessary, then install the subhead using the sub jambs as a guide. Fasteners and shims are not by All Seasons.
- I.** Field seal all butt joints tooling sealant from inside the sub frame.
- J.** Seal the sub frame to the building opening around the entire exterior and interior perimeter using a silicone compatible sealant as specified by the architect or contractor.
- K.** Back bed the window to sub frame contact area with silicone sealant before installing the window or cap seal after the window is installed.
- L.** For jobs with sub heads, field cut to length and install the sub head closure tight to the opening condition.
- M.** Measure the “Z” dimension for sub jamb closure length. Square cut closure to fit.
- N.** To ensure a watertight seal at the interior set the closure in a bed of sealant, unless a vinyl is provided.



MULLION INSTALLATION IN SUB FRAME

- A.** First complete steps A through I on sub frame installation. (Pages 21 & 22 of 23)
- B.** Refer to shop drawings for correct centerline location of the mullions
- C.** Set the mullion into the sub frame. Plumb the mullion to the opening. Fasten the mullion to the opening by using All Seasons supplied mullion anchor clips. Locate one clip at the construction head and one at the sill. Attach the clips to the opening with erector furnished fasteners, and then attach the mullion to the mull anchors with All Seasons furnished fasteners.
- D.** Now follow steps J and K of sub frame installation.
- E.** Attach the mullion brackets to the mullion as close to the top and bottom as possible and then 12" O.C. with All Seasons supplied fasteners.
- F.** Field cut the vertical mullion cover to fit between the opening conditions and snap over the mullion brackets.

SILL AND RECEPTOR SPLICE JOINT DETAILS

- A.** Splice should be every 19'-6" maximum with a 3/8" minimum separation.
- B.** Field apply non-hardening, skinning, sealant at the joint, to prevent water infiltration splice joints must be between windows, not under a window.

COMPLETELY READ ALL SECTIONS WHICH PERTAIN
TO YOUR PROJECT BEFORE STARTING WORK. THIS IS
FOR GENERAL RECOMMENDED ERECTION
PROCEDURES ONLY. FOR ACTUAL JOB CONDITIONS,
SEE THE DETAILS ON THE SHOP DRAWINGS (IF APPLICABLE).

